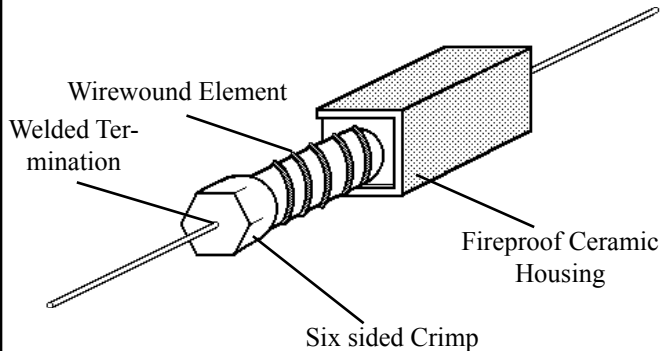




CODECO CORPORATION OF VERMONT

Ceramic Boat Axial Lead Wirewound Resistors

CB Construction:

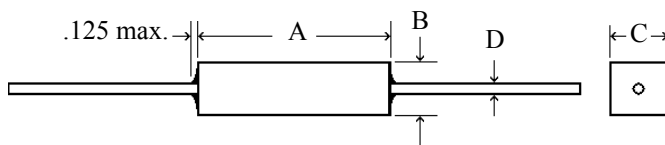


CB Features:

- 2 Watts to 50 watts
- Non-inductive option
- .1Ω to 1.5K
- Flameproof construction
- Fusable available
- Operating Range: -55°C to +275°C
- Leads: Tinned Copper
- Ceramic Case with fireproof fill
- Six sided crimped terminal
- Solvent proof

CB Dimensions

Standard Configuration:



Alternate Configuration (CBF series):



Type	Power	A	B	C	D	Resistance Range
CB-1	1 Watt	.530	.225	.235	.032	.2Ω to 50Ω
CB-2	2 Watts	.700	.245	.255	.032	.2Ω to 125Ω
CB-3	3 Watts	.875	.312	.312	.036	.1Ω to 350Ω
MCB-3	3 Watts	.875	.312	.312	.032	100W to 10K
CB-5	5 Watts	.875	.375	.375	.036	.1Ω to 500Ω
MCB-5	5 Watts	.875	.375	.375	.032	100W to 10K
CB-7	7 Watts	1.400	.375	.375	.036	.15Ω to 750Ω
CB-10	10 Watts	1.875	.375	.375	.036	.2Ω to 1K
CB-15	15 Watts	1.875	.500	.500	.036	.2Ω to 1K
CB-20	20 Watts	2.500	.500	.500	.036	.3Ω to 1.25K
CB-22	22 Watts	2.500	.500	.500	.036	.3Ω to 1.25K
CB-25	25 Watts	2.500	.500	.500	.036	.3Ω to 1.25K
CB-30	30 Watts	2.500	.625	.625	.036	.3Ω to 1.25K
CBR-50	50 Watts	3.750	.750	.750	.036	.5Ω to 1.5K

Also available are the CBF (with feet) to give the max. amount of airflow for heat dissipation.

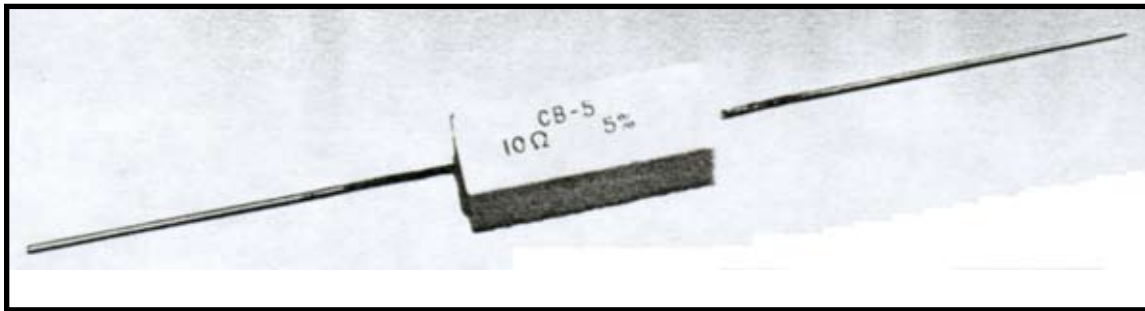


CODECO CORPORATION OF VERMONT

Series: CB

Semi-Precision Wirewound Resistors Flameproof/Fusible

The VPR CB Series resistors are manufactured to exacting specifications. A resistive element is wound around a fiberglass core by precision winders ensuring uniform windings. Special non-inductive windings are available on request. Wire leads and caps are secured to the resistive element. The assembly is then installed in a fireproof ceramic boat and sealed with an especially formulated silicone compound. This provides excellent heat dissipation as well as single unit construction. A rigid QC program assures our customer that each part manufactured is to our specifications which eliminates costly customer rejects. All of our CB series resistors are available with fusible elements. All CB series parts are RoHS compliant.



Applications:

Type CB resistors are recommended:

1. In circuits where a wirewound resistor is required with a wattage dissipation equal to or greater than a standard film or composition resistor.
2. For operation at a very high ambient temperature.
3. For radio, TV, or industrial circuits requiring high wattage dissipations or anywhere a fireproof resistor is essential.
4. In medium to high power bridge circuits requiring balanced pairs.
5. In power attenuator networks.
6. Wherever a low cost, easily installed resistor is required.
7. In special applications requiring positive temperature coefficients, such as transistor stages.
8. Applications where a fusible resistor will replace both a fuse and a resistor. Consult our offices on this one.

Electrical Specifications:

Power Rating: 1 to 50 watts
Resistance Range: 0.1W to 1.5K
Tolerance: 5% and 10%
Operating Temp: -55°C to +275°C

Temperature Coefficients:
Below 1W, $\pm 800\text{PPM}/^\circ\text{C}$
Above 1W, $\pm 300\text{PPM}/^\circ\text{C}$